

State of Rhode Island and Providence Plantations

Budget



Fiscal Year 2016

Volume III – Education

Gina M. Raimondo, Governor

Agency

Rhode Island Council On The Arts

Agency Mission

To ensure that the role of the arts in the life of Rhode Island communities will continue to grow and play an increasing role in the welfare and educational experience of Rhode Islanders.

Agency Description

The Rhode Island State Council on the Arts (RISCA) was established in 1967. It provides grants, technical assistance and support to artists, arts organizations, schools, community centers, social service organizations, and local governments to bring the arts into the lives of Rhode Islanders. RISCA employs a variety of methods to carry out its work, including grant-making, strategic partnerships, outreach and facilitation.

Funding within the agency's various grant categories allows the Council to address its primary function by awarding grants to artists and non-profit organizations to support arts programming in local communities, schools and other settings. RISCA-supported cultural programs have a significant impact on the local and state economy, providing jobs for artists and the many businesses that depend on a vibrant arts community. RISCA grants also play an important role in providing a complete education for all Rhode Island children and youth, helping students develop creativity and problem-solving skills that will contribute to their success in life.

RISCA is involved in a series of strategic partnerships with major institutions and entities from the public and private sectors to broaden support for the arts in Rhode Island. A few current partners include: the National Endowment for the Arts, the New England Foundation for the Arts, the Rhode Island Foundation, the Rhode Island Alliance for Arts Education, the Rhode Island Teaching Artists Center (RITAC), VSA arts of Rhode Island, the Rhode Island Department of Elementary and Secondary Education, the Massachusetts Museum of Contemporary Art (MassMoCA), among others.

RISCA provides technical assistance and information services to a large number of individuals and entities. These services include management assistance to individual artists and arts organizations, workshops, and general dissemination of information through a wide variety of media including the RISCA website and blog, the monthly newsletter, and RISCA's social media accounts.

RISCA manages Rhode Island's Art for Public Facilities Program, which allows the Council to commission or acquire works of art for state buildings through the Allocation for Art for Public Facilities Act, which sets aside a portion of funds for the construction or renovation of state facilities for the acquisition of art. The Council coordinates the process for commissioning art in public facilities in compliance with the Act, providing opportunities for the general public to experience art as part of their interaction with state government.

Statutory History

R.I.G.L. 42-75 defines the role of the Council.

R.I.G.L. 42-75.2 describes the Allocation for Art for Public Facilities Act.

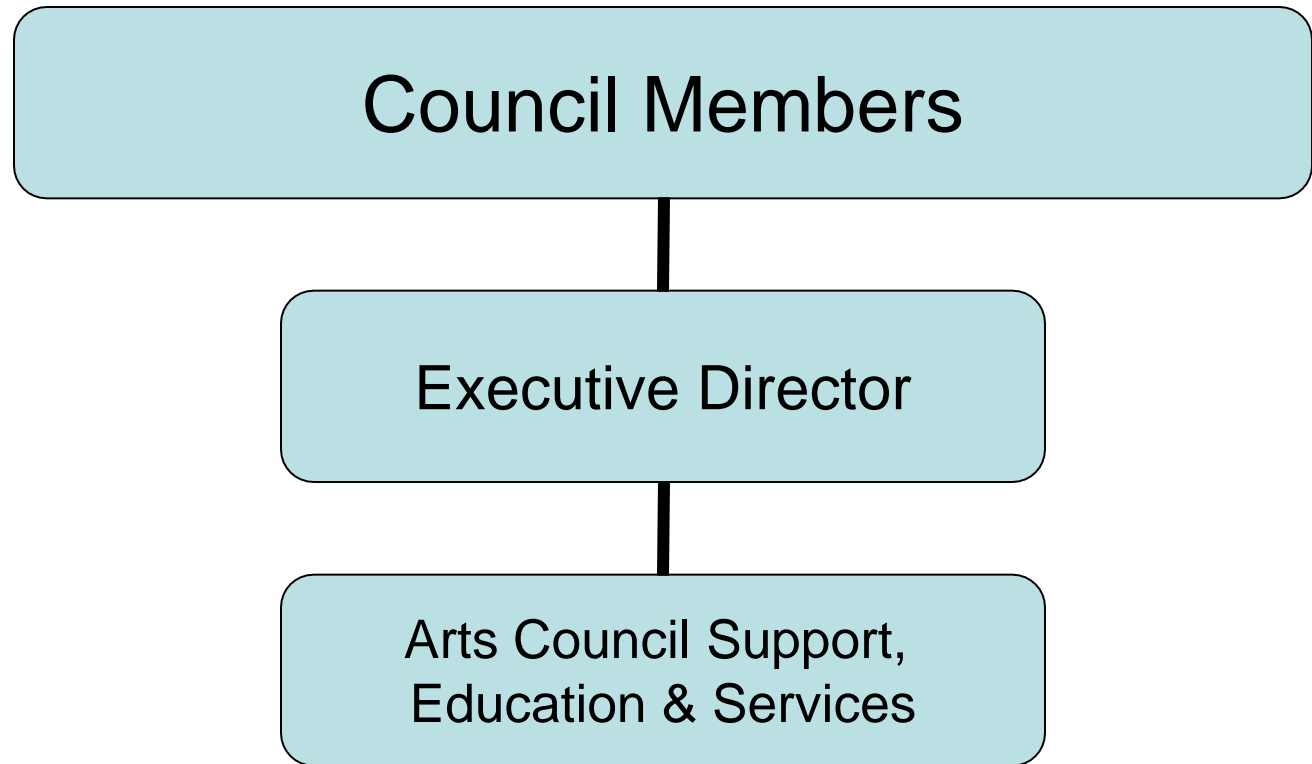
Budget

Rhode Island Council On The Arts

	FY 2013 Audited	FY 2014 Audited	FY 2015 Enacted	FY 2015 Revised	FY 2016 Recommend
Expenditures By Program					
Central Management	1,935,530	1,376,375	1,860,385	1,918,412	2,626,833
Grants Programs	1,159,157	904,574	1,054,574	1,054,574	1,054,574
Total Expenditures	\$3,094,687	\$2,280,949	\$2,914,959	\$2,972,986	\$3,681,407
Expenditures By Object					
Personnel	596,563	595,428	623,868	648,179	669,679
Operating Supplies and Expenses	46,909	61,366	83,981	111,861	111,861
Assistance and Grants	1,644,953	1,368,897	1,604,574	1,511,574	1,546,574
Subtotal: Operating Expenditures	2,288,425	2,025,691	2,312,423	2,271,614	2,328,114
Capital Purchases and Equipment	806,262	255,258	602,536	701,372	1,353,293
Total Expenditures	\$3,094,687	\$2,280,949	\$2,914,959	\$2,972,986	\$3,681,407
Expenditures By Funds					
General Revenue	1,561,217	1,310,474	1,483,075	1,491,068	1,507,761
Federal Funds	713,635	686,230	799,348	735,546	775,353
Operating Transfers from Other Funds	819,835	284,245	632,536	746,372	1,398,293
Total Expenditures	\$3,094,687	\$2,280,949	\$2,914,959	\$2,972,986	\$3,681,407
FTE Authorization	6.0	6.0	6.0	6.0	6.0

The Agency

Rhode Island Council on the Arts



Personnel

Rhode Island Council On The Arts Agency Summary

	Grade	FY 2015		FY 2016	
		FTE	Cost	FTE	Cost
Unclassified		6.0	361,198	6.0	371,613
Subtotal		6.0	\$361,198	6.0	\$371,613
Total Salaries		6.0	\$361,198	6.0	\$371,613
Benefits					
Payroll Accrual			2,066		2,119
Retiree Health			24,380		22,297
Health Benefits			88,992		97,179
FICA			27,631		28,427
Retirement			87,881		91,565
Subtotal			\$230,950		\$241,587
Total Salaries and Benefits		6.0	\$592,148	6.0	\$613,200
Cost Per FTE Position (Excluding Temporary and Seasonal)			\$98,691		\$102,200
Statewide Benefit Assessment			\$15,531		\$15,979
Payroll Costs		6.0	\$607,679	6.0	\$629,179
Purchased Services					
Information Technology			500		500
Management & Consultant Services			15,000		15,000
Training and Educational Services			15,000		15,000
Design and Engineering Services			10,000		10,000
Subtotal			\$40,500		\$40,500
Total Personnel		6.0	\$648,179	6.0	\$669,679
Distribution By Source Of Funds					
General Revenue		4.0	\$417,288	4.0	\$433,981
Federal Funds		2.0	\$205,891	2.0	\$210,698
Operating Transfers from Other Funds		-	\$25,000	-	\$25,000
Total All Funds		6.0	\$648,179	6.0	\$669,679

Performance Measures

Rhode Island Council On The Arts Central Management

Communities Served

The Rhode Island State Council on the Arts (RISCA) sets a high standard for serving every Rhode Island community. The figures below represent the percentage of Rhode Island's 39 cities and towns that have been served by RISCA through grants or direct services. This measure does not reflect Rhode Islanders and visitors who participate in the arts in communities other than their own. Data reported annually.

	2012	2013	2014	2015	2016
Target	90%	92%	95%	95%	95%
Actual	95%	100%	100%	--	--

Performance for this measure is reported by state fiscal year.

Artists Supported

The figures below represent the number of artists who have been employed or engaged in programs supported by RISCA. This employment is either part-time or full-time and is an indicator of the role the arts play in the state's economy. Data reported annually.

	2012	2013	2014	2015	2016
Target	28,000	26,500	28,000	28,000	29,000
Actual	33,032	28,286	34,548	--	--

Performance for this measure is reported by state fiscal year.

Program Participation

The figures below represent the number of individuals who have attended or taken part in arts programs supported by RISCA. Data reported annually.

	2012	2013	2014	2015	2016
Target	2,400,000	2,300,000	2,500,000	2,600,000	2,700,000
Actual	2,224,256	2,760,029	3,958,373	--	--

Performance for this measure is reported by state fiscal year.
